

At Saint Mary's our commitment to our students extends well beyond the classroom.

Our students come to us from a diverse array of circumstances. Saint Mary's University's Child Care Centre helps make the transition to university life easier, for many students who are also parents of young children. It provides top quality care for children 18 months to five years of age, and is open firstly to our students, faculty and staff, but also to members of our surrounding community.

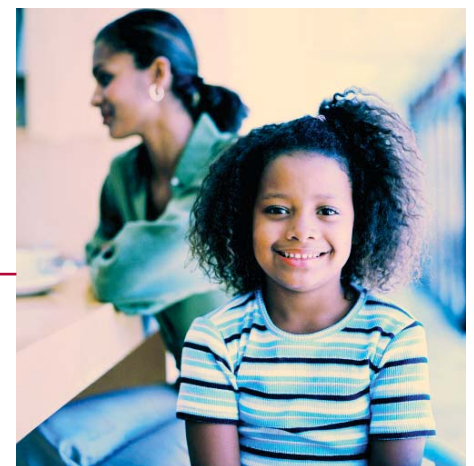
Knowing their child is well-tended to, on-campus and within close proximity, is often a critical factor that helps some students, faculty and staff decide to join and remain a part of our close community. For this reason, we see its role as pivotal.

Our Child Care Centre operates as a community-based registered charity and, as such, all fees, charges and other income are used to ensure the highest quality of care and education for the children. The centre accommodates 35 children, with a typical waiting list of 50-75.

With increased funding, the Centre will provide more flexible hours of operation that reflect the unique scheduling needs of our students. We will be able to extend

the age range of children in our care to include infants younger than 18 months. And, expansion to the facility and playground will provide greater room to learn, play and grow.

In the broader scheme of our Campaign, these changes represent a relatively modest improvement. But as with children, sometimes the smallest investments pay the most rewarding dividends.



Making the transition to university life easier.